

HIVEMANAGER NG PUBLIC CLOUD

Aerohive's Next-Generation Network Management Solution

HiveManager NG Public Cloud sets a new standard for simplicity and flexibility in unified networking. An intuitive user interface presents powerful network management tools like streamlined configuration workflows, real-time client and event monitoring, simplified troubleshooting and versatile RF planner tools. It also provides access to Aerohive APIs that enable tailored business applications. HiveManager truly is a platform for a next-generation network focused on mobility.

HiveManager NG Public Cloud is housed in Aerohive's Cloud Services Platform; our globally distributed, cloud-based network. The Cloud Services Platform is hosted in secure SOC Type II compliant data centers, with 24x7 monitoring, scheduled backups and disaster recovery capabilities.

FEATURES & BENEFITS

Bringing up a network of Aerohive devices is as simple as plugging them in and opening a browser to the Aerohive Cloud Services Platform. Aerohive devices connect to HiveManager NG using secure protocols that traverse NAT and firewalls. With HiveManager NG, you can deploy and configure an enterprise-class network within 15 minutes. In addition to sophisticated network management functionality, HiveManager NG provides value beyond connectivity with advanced mobility features. Key benefits include:

Dashboard: Intuitive, visual dashboard with contextual filters for a comprehensive overview of network assets, status cards with key metrics, application and data usage as well as user activity.

Application Visibility and Control: Visibility and control of application usage on the network, for professional and recreational applications.

Monitoring: Real-time view of devices, clients, alarms and events. Ability to take informed action on devices immediately from the monitoring interface.

HiveManager is available in Aerohive's **Select** and **Connect** solution tiers. In Connect, it is optimized for customers who desire enterprise-grade connectivity with a streamlined user experience and simplicity that matches their operating model.

The Select network management solutions offer the full capabilities of the HiveManager platform for larger organizations with comprehensive security, policy, analytics and troubleshooting requirements. Select includes the HiveManager NG and HiveManager Classic solutions. HiveManager allows administrators to start with Connect and seamlessly upgrade to Select as their requirements evolve.

Simplified Deployment: Guided workflows for creating and deploying network policies, with optional advanced configuration

Troubleshooting: Help-desk optimized interface to triage historical and real-time client problems with actionable data to reduce escalation and provide a better end-user experience.

Unified Network Management: Single-pane-of-glass management of wireless and wired devices.

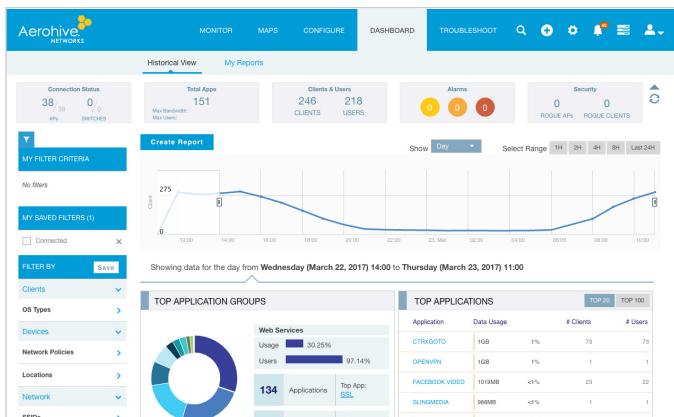
Multi-tenancy Capability: Ability to manage multiple customer accounts from one master account.

Open APIs: Access to Aerohive's monitoring, identity and configuration APIs. Presence and location APIs available with an optional upgrade to the Insight solution.

Guest Access: Onboarding and management of visitor and employee personal devices, included in HiveManager NG.

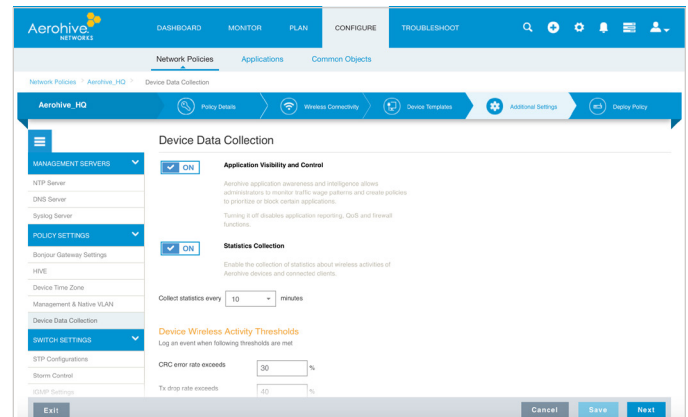
HIVEMANAGER NG PUBLIC CLOUD – QUICK VIEW

DASHBOARDS



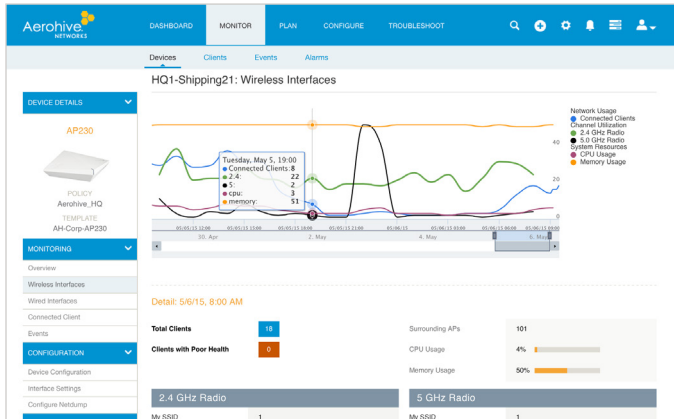
Powerful dashboard with contextual filters and time range slider provides current and historical views, application visibility, client count, device data usage, and ability to drilldown to 360 degree views of network policy, device, application, client and user.

STREAMLINED CONFIGURATION



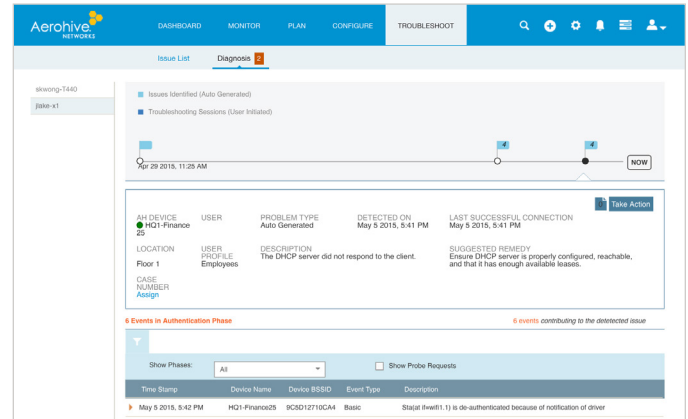
Streamlined device and network configuration with task-based policy workflows enable configuration of a mobility network from signup to deployment within 15 minutes.

CENTRALIZED MANAGEMENT



Centralized network management with unified policy and monitoring for access points and switches with context-aware user policies.

HISTORICAL AND REAL-TIME TROUBLESHOOTING



Help-desk optimized troubleshooting interface enables historical and realtime troubleshooting, provides a problem summary and suggested remedies, and reduces problem escalation.

PRODUCT SPECS

Simplified Deployment

- Customer self-service sign-up
- Guided workflow for network policy deployment
- Interactive on-screen step-by-step guided configuration help
- RF planner with map import and export
- Ability to swap simulated APs with real Aerohive APs on RF planner map
- Devices automatically connect to HiveManager NG for provisioning
- Devices auto-provision with network policy and firmware updates

Centralized Configurations

- Guest Access functionality
- Device templates for switches and APs
- Aerohive device as RADIUS & DHCP server
- Centralized view of all configuration objects
- Ability to bulk edit device properties
- Ability to schedule firmware upgrade
- Bonjour gateway support
- Command Line Interface access to Aerohive devices
- Support for select Dell N-series switches
- Active directory/LDAP
- IPv6 support
- Syslog and SNMP server configuration
- Auto provisioning

Centralized Policy Management

- Device classification by location & timezone
- Customer application definition
- Client classification by location, OS type, MAC address
- Multiple user profiles for each SSID
- Time-based firewall and QoS policy
- Application, network, and MAC Layer firewall policy rules
- WIPS policy for rogue AP detection

Dashboard

- Graphical widgets and status cards with drill-down capabilities
- Time range slider on dashboard for historical view
- 360° views of Aerohive network policies, AP, client devices, users and applications
- Global search function by network policy, MAC address, serial number, user or application name
- 7 days of historic monitoring and reporting data
- Interactive Network Summary Report with easy sharing
- Savable contextual filters by location, SSID, policy, user profile, and client OS type

Monitor

- WIPs history report
- Drill down capability from client list to client 360 view
- Device list with rich utilities for advanced configuration and investigation
- Real time client list with SNR, RSSI, data usage and connection status
- Savable and reusable filters shared across dashboard and monitor
- Alarm and event lists with historical and real-time data
- PCI 3.1 compliant reporting
- Rogue AP and rogue client monitoring
- Real-time data for connected clients and users
- Map based navigation

Reliability

- Data centers with SOC Type II compliance (formerly SAS Type II)
- High availability with disaster recovery and redundancy
- Scheduled backups
- 24x7 monitoring

Troubleshooting

- Help-desk optimized interface with problem summary and suggested remedy
- Dedicated Helpdesk user role for simple access management
- Real-time troubleshooting with probe messages and stage filters
- Historical troubleshooting with automatically detected issues
- Alert widget in HealthView for top-level view of alerts by category, status and error messages
- Mark issue resolved or escalate issue with email notification
- Built-in command line interface
- RADIUS test
- AP technical data download

Security and Privacy

- Role based access control
- Customer and network data is private and secure
- No customer data traverses Aerohive's network

Guest Access

- On-boarding and management of visitor and employee personal devices
- Provides seven on-boarding workflows via Captive Web Portal, Kiosk and Guest Check-In applications
- Private PSK (PPSK), PSK and 802.1X (RADIUS) authentication

Supported Hardware Platforms

AP: 120, 121, 122, 130, 141, 170, 230, 245x, 250, 320, 330, 340, 350, 370, 390, 550, 1130

SR: 2024P, 2124P, 2148P, 2208P, 2224P, 2324P, 2348P

PRODUCT SKUs & FEATURE COMPARISON

HiveManager NG	SKU	Description
	AH-(NG)CS-XXX-1YR	HiveManager NG Public Cloud Subscription for 1 network device for 1 year
	AH-(NG)CS-XXX-3YR	HiveManager NG Public Cloud Subscription for 1 network device for 3 year
	AH-(NG)CS-XXX-5YR	HiveManager NG Public Cloud Subscription for 1 network device for 5 year

Feature	HiveManager Connect	HiveManager NG
Basic Network device and client monitoring	✓	✓
Advanced 360 degree device and client monitoring		✓
Global search and filter	✓	✓
802.1X, PSK and open networks	✓	✓
Guided Network configuration	✓	✓
Advanced Troubleshooting and Reporting		✓
RF Planning	✓	✓
Calibrated and Predictive Heat Maps		✓
Aerohive Private Pre-Shared Key		✓
Separate Guest Access SSID with use Policy Acceptance	✓	✓
Advanced CWP for Guest Self-Registration and Mobile Apps		✓
Application Visibility and Optimization		✓

